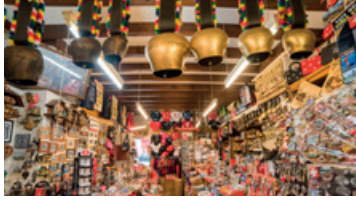


# Your offers with the Lausanne Transport Card & More 2017

## Leisure and shopping



### Bazar d'Ouchy

Avenue d'Ouchy 76

☎ +41 21 616 23 77

[www.bazarouchy.com](http://www.bazarouchy.com)



**20% off a selection of cuckoo clocks and small clocks**

**20% discount on all magnets**

Transport

Bus N° 2, "Ouchy-Olympique" stop  
m2 metro, "Ouchy-Olympique" station

Map A11



### Bowl Bar Flon

Rue des

Côtes-de-Montbenon 22

☎ +41 21 552 10 30

[www.flonbowling.ch](http://www.flonbowling.ch)



**30% off an hour of bowling**

Transport

m2 metro, "Flon" station

Map D10



### Cinémathèque suisse

Casino de Montbenon,

Allée Ernest Ansermet 3

☎ +41 58 800 02 00

[www.cinematheque.ch](http://www.cinematheque.ch)



**CHF 8.- (instead of CHF 10.-)**

**for regular screenings at Casino de Montbenon**

Transport

Bus N° 12, 13, "Montbenon" stop

Bus N° 3, 21, 6, "Cecil" stop

m1 metro, "Vigie" station

Map H10



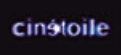
### Cinéoile

Centre Malley Lumières

Chemin du Viaduc 1

☎ +41 21 621 88 20

[www.cinetoile.ch](http://www.cinetoile.ch)



**Full rate**

**CHF 16.- (instead of CHF 19.-)**

**Reduced rate**

**CHF 13.- (instead of CHF 16.-)**

Not valid on supplement for 3D movies and glasses

Transport

Bus N° 17, 18, "Galicien" stop

m1 metro, "Malley" station

Regional train, "Prilly-Malley" station

Map F7



### Compagnie Générale de Navigation (CGN)

Ouchy landing pier

Infoline: ☎ +41 900 929 929

(CHF 0.50 min)

[www.cgn.ch](http://www.cgn.ch)



**Ouchy - Evian crossing (round-trip)**

**2<sup>nd</sup> class CHF 28.80**

**(instead of CHF 36.-)**

**1<sup>st</sup> class CHF 40.80**

**(instead of CHF 51.-)**

**Ouchy - Thonon crossing (round-trip)**

**2<sup>nd</sup> class CHF 40.-**

**(instead of CHF 50.-)**

**1<sup>st</sup> class CHF 56.-**

**(instead of CHF 70.-)**

Plus an additional **50% discount** for holders of half-fare card, as well as for children (aged 6-16).

Transport

Bus N° 2, "Ouchy-Olympique" stop

m2 metro, "Ouchy-Olympique" station

Map A11



### Théâtre de Vidy

Avenue E. H. Jaques-Dalcroze 5

☎ +41 21 619 45 45

[www.vidy.ch](http://www.vidy.ch)



**CHF 29.- the seat (instead of CHF 45.-)**

From January to June and from September to December 2017, subject to the number of available places. The offer includes a welcome pack and a voucher for a drink at the Kantina.

Transport

Bus N° 2, "Théâtre de Vidy" stop

Map C8

## Museums

This offer is valid from **January 1<sup>st</sup> to December 31<sup>st</sup> 2017**, for all the museums below on presentation of the **Lausanne Transport Card & More 2017**. **Discount only on the individual rates for adult and child. (Offer cannot be cumulated with other offers).**

**Warning: it is best to check the museums' opening hours before your visit. All information is available on**

**[www.lausanne-tourisme.ch/museums](http://www.lausanne-tourisme.ch/museums)**



### The Olympic Museum

Quai d'Ouchy 1

☎ +41 21 621 65 11

[www.olympic.org/musee](http://www.olympic.org/musee)



**CHF 14.- (instead of CHF 18.-)**

**Children (6-16 years)**

**CHF 8.- (instead of CHF 10.-)**

Transport

Bus N° 2, "Ouchy-Olympique" stop

Bus N° 8, 25, "Musée Olympique" stop

m2 metro, "Ouchy-Olympique" station

Map B12



### Fondation de l'Hermitage

Route du Signal 2

☎ +41 21 320 50 01

[www.fondation-hermitage.ch](http://www.fondation-hermitage.ch)



**CHF 15.- (instead of CHF 19.-)**  
**Children (free up to age 6)**

Transport

Bus N° 16, "Hermitage" stop

Bus N° 3, "Motte", stop

from there 5 min. on foot.

Map F12



### Free entrance to the cantonal museums of the Palais de Rumine

Place de la Riponne 6

☎ +41 21 316 33 10

[www.musees.vd.ch](http://www.musees.vd.ch)

### Musée d'archéologie et d'histoire (mcah)



### Musée des Beaux-Arts (mcb-a)



### Musée de géologie (mzg)



### Musée monétaire (mmc)



### Musée de zoologie (mz)



Transport

Bus N° 1, 2, "Rue Neuve" stop

Bus N° 7, 8, "Riponne" stop

m2 metro, "Riponne-Maurice Bégart" station

Map E12

# Your offers with the Lausanne Transpord Card & More 2017



## Musée de l'Elysée

Avenue de l'Elysée 18  
 ☎ +41 21 316 99 11  
[www.elysee.ch](http://www.elysee.ch)



**CHF 6.- (instead of CHF 8.-)**  
**Children (free up to age 16)**

Transport  
 Bus N° 2, "Croix d'Ouchy" stop  
 Bus N° 4, "Montchoisi" stop  
 Bus N° 8, "Musée Olympique" stop  
 Bus N° 25, "Elysée" stop  
 m2 metro, "Délices" station  
 Map B12



## Collection de l'Art Brut

Avenue des Bergières 11  
 ☎ +41 21 315 25 70  
[www.artbrut.ch](http://www.artbrut.ch)



**CHF 5.- (instead of CHF 10.-)**  
**Children (free up to age 16)**

Transport  
 Bus N° 2, 3, 21,  
 "Beaulieu-Jomini" stop  
 Map F10



## Musée romain de Lausanne-Vidy

Chemin du Bois-de-Vaux 24  
 ☎ +41 21 315 41 85  
[www.lausanne.ch/mrv](http://www.lausanne.ch/mrv)



**CHF 5.- (instead of CHF 8.-)**  
**Children (free up to age 16)**

Transport  
 Bus N° 1, 2, 6, "Maladière" stop  
 Bus N° 25, "Bois-de-Vaux" stop  
 Map D6



## Musée de la main UNIL-CHUV

Rue du Bugnon 21  
 ☎ +41 21 314 49 55  
[www.museedelamain.ch](http://www.museedelamain.ch)



**CHF 7.- (instead of CHF 9.-)**  
**Children CHF 5.- (age 7-16)**  
**(free up to age 6)**

Transport  
 m2 metro, "CHUV" station  
 Map E13



## Musée et jardins botaniques cantonaux (mjbc)

Avenue de Cour 14bis  
 ☎ +41 21 316 99 88  
[www.botanique.vd.ch](http://www.botanique.vd.ch)



**Free entrance**  
**20% discount on all the museum's publications**

Transport  
 Bus N° 1, 25, "Beauregard" stop  
 m2 metro, "Délices" station  
 Map C10



## mudac

Place de la Cathédrale 6  
 ☎ +41 21 315 25 30  
[www.mudac.ch](http://www.mudac.ch)



**CHF 5.- (instead of CHF 10.-)**  
**Children (free up to age 16)**

Transport  
 Bus N° 6, 7, "Bessières" stop  
 Bus N° 16, "Pierre-Viret" stop  
 m2 metro, "Bessières" station  
 Map E12



## Espace des inventions

Vallée de la Jeunesse 1  
 ☎ +41 21 315 68 80  
[www.espace-des-inventions.ch](http://www.espace-des-inventions.ch)



**CHF 5.- (instead of CHF 7.-)**  
**Children (age 7-16) free**  
**(instead of CHF 5.-)**

Transport  
 Bus N° 1, 2, 6, 25, "Maladière" stop  
 m1 metro, "Malley" station  
 Map D7



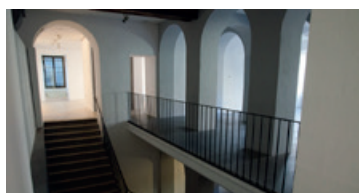
## Musée d'art de Pully

Chemin Davel 2  
 ☎ +41 21 721 38 00  
[www.museedartdepully.ch](http://www.museedartdepully.ch)



**CHF 5.- (instead of CHF 7.-)**  
**Children (free up to age 16)**

Transport  
 Bus N° 4, 25, 47, 48, "Pully-Gare" stop  
 Regional train, "Pully-Gare" station  
 Map B16



## Espace Arlaud

Place de la Riponne 2 bis  
 ☎ +41 21 316 38 50  
[www.musees.vd.ch](http://www.musees.vd.ch)



**CHF 4.- (instead of CHF 6.-)**  
**Children (free up to age 16)**

Transport  
 Bus N° 1, 2, "Rue Neuve" stop  
 Bus N° 7, 8, "Riponne" stop  
 m2 metro, "Riponne-Maurice Béjart" station  
 Map E11



## Musée historique de Lausanne

Place de la Cathédrale 4  
 ☎ +41 21 315 41 01  
[www.lausanne.ch/mhl](http://www.lausanne.ch/mhl)



**Closed for transformation**  
 Soon a new permanent exhibition  
 Reopening at the autumn 2017

Transport  
 Bus N° 6, 7, "Bessières" stop  
 Bus N° 16, "Pierre-Viret" stop  
 m2 metro, "Bessières" station  
 Map E12



## f'ar forum d'architectures, lausanne

Avenue de Villamont 4  
 info@archi-far.ch  
[www.archi-far.ch](http://www.archi-far.ch)

**Free entrance**

Transport  
 Bus N° 1, 2, 4, 8, 9, 12, 17,  
 "Georgette" stop  
 Map D12



## ArchéoLab Pully

Avenue du Prieuré 4  
 ☎ +41 21 721 38 00  
[www.archeolab.ch](http://www.archeolab.ch)



**CHF 5.- (instead of CHF 7.-)**  
**Children (free up to age 16)**

Transport  
 Bus N° 4, 25, 47, 48, "Pully-Gare" stop  
 Regional train, "Pully-Gare" stop  
 Map B16